

TECHNICAL FILE

# ATG LC15

## Autonomous treatment of structural humidity

The "GEOMAGNETIC" process consists of capturing the energy used by water molecules to rise in structures and sending it back in opposition in order to depolarize the walls and remove all electrical charges.

No longer supplied with water, the walls can dry out through natural evaporation (between 18 and 24 months depending on the specifics of the building and the monitoring of recommendations).

Thus, the cause of capillary rise is definitively eliminated



Mold



salt peter



tidemark



Emission of a magnetic counter-field



The walls are depolarized, the water molecules can no longer rise



Walls are dried by evaporation

## A radical solution

- **MANUFACTURER'S WARRANTY:** 10 years on the device
- **GUARANTEE OF EFFECTIVENESS:** more than 10 years of experience on geomagnetic treatments.
- **This device does not include any active electrical elements**





## 10 REASONS TO CHOOSE ATG LC15

- 1 Economical technique
- 2 No heavy work weakening the building
- 3 Treat the cause of the problem, not the effects
- 4 Treats the entire building, walls and floors
- 5 Autonomous device, no electricity consumption
- 6 No maintenance, no wearing parts
- 7 Lifespan greater than 30 years
- 8 Reduced heating costs
- 9 French made
- 10 10 years of hindsight on geomagnetic treatments

## THE RESULTS IN PICTURES



### 10 different models

The ATG LC 15 (Geomagnetic Polarity Inverter or Geomagnetic Technical Drying) covers an action radius of up to 7.5m for a total diameter of 15m, this geomagnetic polarity inverter eliminates humidity problems in walls and more precisely capillary rises.

Our ATG LC 15 device is quick to install.

It is suitable for all old homes.

The ATG LC 30 is made in France (Castres 81)

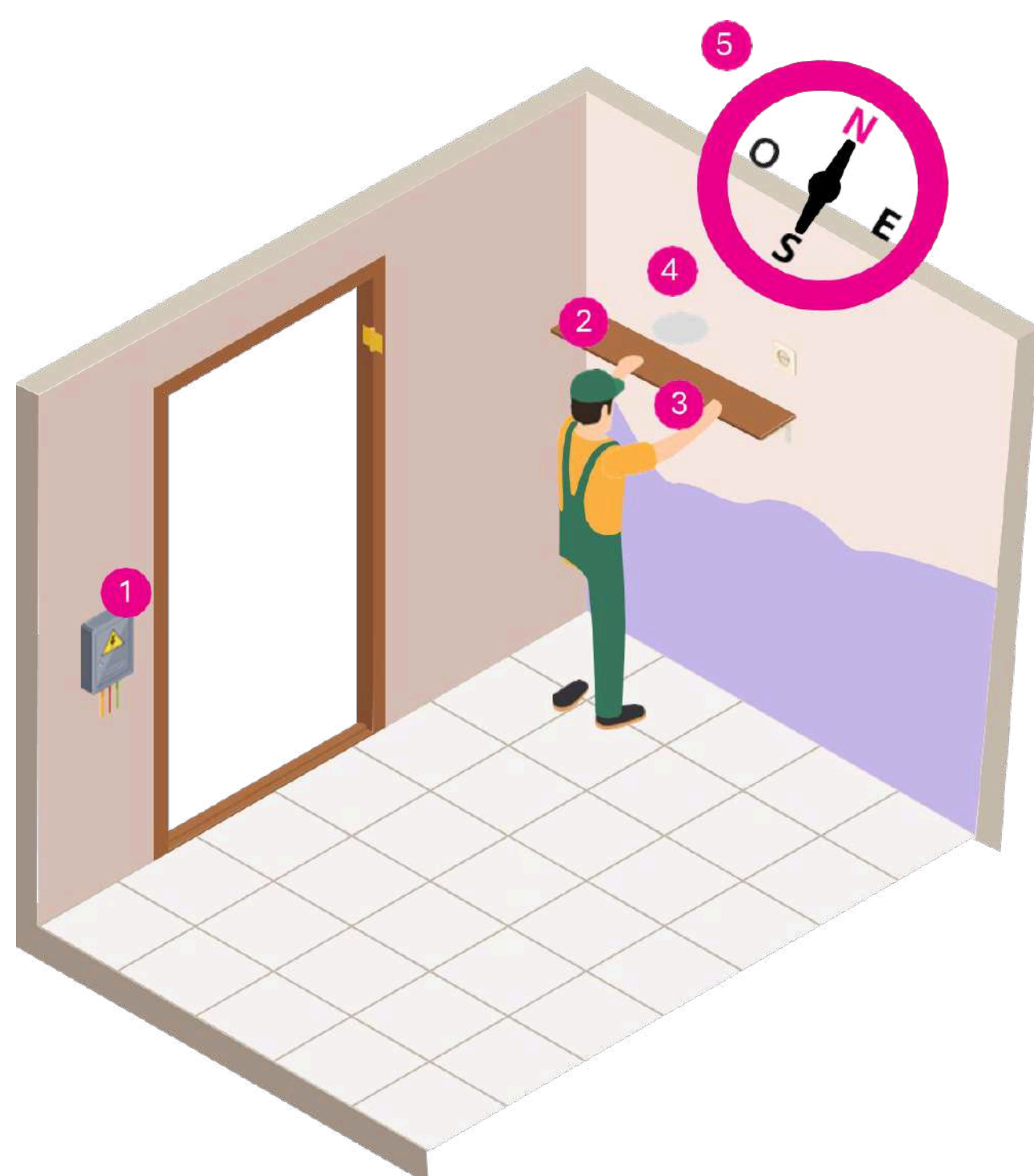
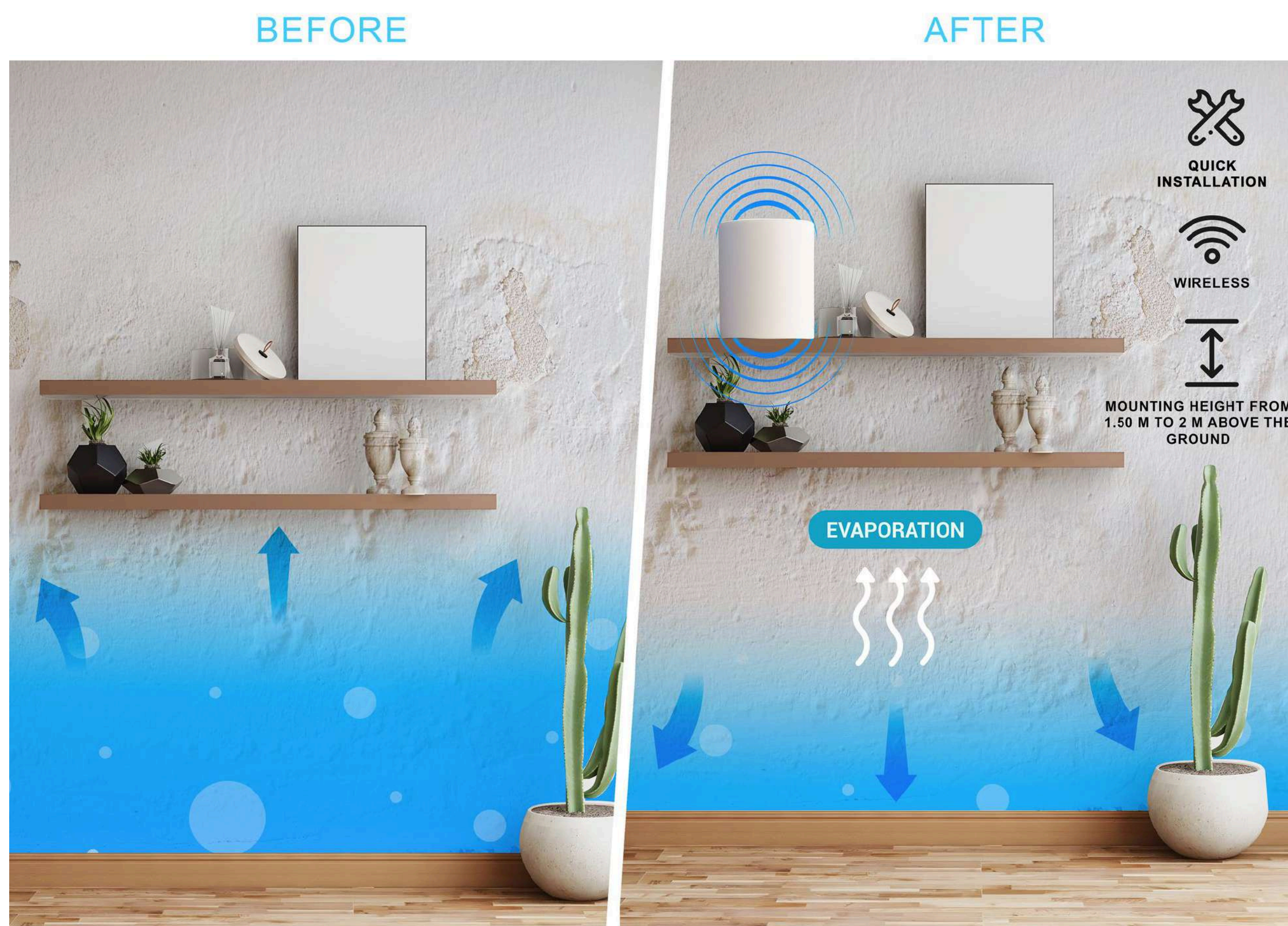
Weighing 1.2 kg, the ATG LC15 model measures 180x170



# ATG LC installation and use instructions

## How to choose your device?

Please select a device whose action radius is large enough to cover the entire area to be treated.



## Installation in 5 rules:

- 1 The device must be installed at least 1.50m from any electrical or electronic device.
- 2 Fixing height of 1m50 to 2m from ground level.
- 3 The device must be placed and glued (glue or double-sided tape) so as not to be moved.
- 4 Position on any wall in the house. Please select a device whose action radius is large enough to cover the entire area to be treated.
- 5 Orient it towards north with a compass or the phone's compass application.



# Technical specifications & recommendations

## 1) STRIPPING OF FILM-GENERATED COATINGS OR COATINGS

- It is recommended to strip the bottom of the walls during the drying period to a height of approximately 10 cm above the deterioration fringe so that the walls can breathe.

## 2) HOUSING VENTILATION

- Good air circulation is necessary since drying occurs partly by evaporation. It is therefore essential to ventilate.
- To install suitable ventilation in your home.
- To ensure that doors and windows comply with standards (doors offset at least 1.5cm in dry rooms and 2cm in wet rooms).
- Installation of window vents.

## 3) RESTORATION OF COATINGS AND PAINTING

- When the walls have dried, the moisture-hungry hygroscopic salts have migrated to the surfaces and it is then essential to brush to remove most of them. For wall drying to be perfect, not only must the walls be dry and healthy, but it is absolutely necessary to prevent mineral salts from rising into the coatings.
- We advise you to redo your facade coatings with a lime coating with an adjuvant against hygroscopic salts.

## 4) INSTALLATION OF A DRAIN

- It is recommended to make a drain in the event of lateral infiltration. The function of drainage is to collect groundwater and evacuate it before it reaches the foundations.

The drying speed of walls is influenced by several factors such as their thickness, composition and coating. It is also crucial to strictly follow our recommendations to ensure optimal results. It is important to note that this device is not intended to solve water infiltration, flooding or mold problems in your home; these issues should be addressed independently.